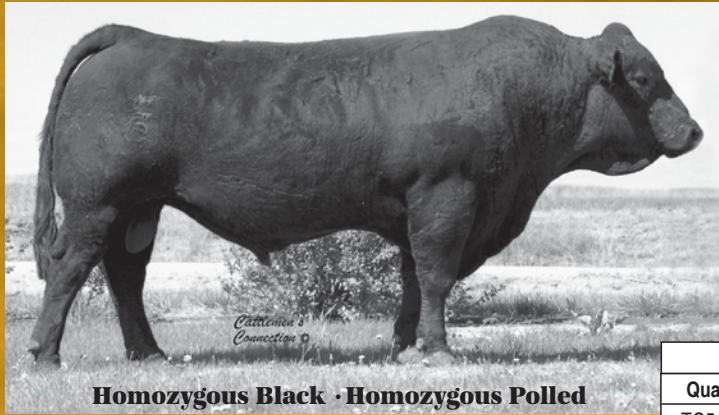


# MLH Goldrush Visa J40



**Homozygous Black · HOMOZYGOUS POLLED**

Sire: M/L Advantage · Dam: Miss Goldrush F42

**Goldrush Visa** has put a stamp on his progeny. Daughters are deep, broody, yet feminine, and sons have length, growth and muscle. One daughter has produced both *Designer Genes*—who sold half interest for \$30,000 and *Strait Forward*, a purebred Gelbvieh bull with a 7-Star GeneSTAR ranking!

Why sacrifice growth and performance to get calving ease? Goldrush Visa brings both to the table. Combine that with his exceptional Grid Merit and Feedyard Merit EPDs—the all-around sire.

Visa is one of the rare Gelbvieh bulls to have both TG5 marbling genes, as well as a T3 gene on the tenderness side!



Quality Grade		Tenderness		
TG5	M2	CAST	Calp316	T3
★★	0	★	0	★

*Goldrush Visa J40*

**Maternal +**

**Performance +**

**Carcass**

Semen available from:  
Bull Barn Genetics  
Cattlemen's Connection,  
Cattle Visions  
Goldrush Genetics  
Semex

**Mike Hynek**

1058 Rd. 2300

Guide Rock, NE 68942

402-257-2200

[www.goldrushgenetics.com](http://www.goldrushgenetics.com)

*"The Next Stage in Carcass Genetics"*

Visa's Spring 2007 EPDs:

<b>CE</b>	<b>BW</b>	<b>WW</b>	<b>YW</b>
110/.56	0.1/.86	49/.80	98/.64
<b>MK</b>	<b>TM</b>	<b>GL</b>	<b>CD</b>
19/.33	44	1/.82	107/.28
<b>SC</b>	<b>ST</b>	<b>CW</b>	<b>REA</b>
0.1/.62	12/1	-8/.39	0.11/.40
<b>MB</b>	<b>FT</b>	<b>GM</b>	<b>FM</b>
0.04/.36	-0.01/.36	15.37	32.60



**Miss Goldrush M80**

A Goldrush Visa daughter, dam of MLH Wrangler R21

**Goldrush Genetics**

